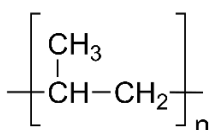


Zadanie 16.1

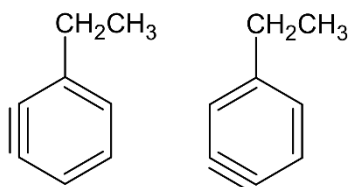
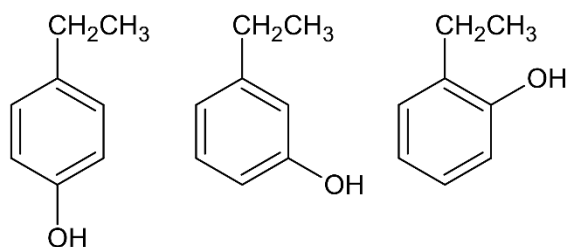
300 merów

**Zadanie 16.2**

Etap 1: addycja

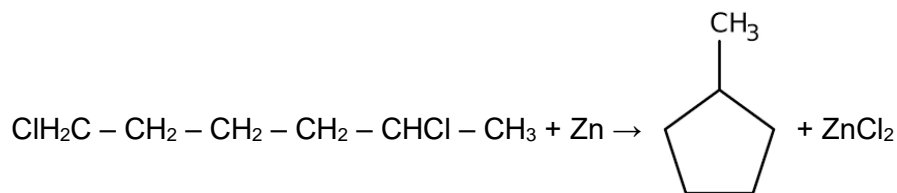
Etap 2: eliminacja

Etap 3: polimeryzacja

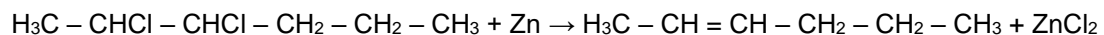
Zadanie 16.3562,2 m³**Zadanie 17.1****Zadanie 17.2**4-etylofenol
lub
p-etylofenol3-etylofenol
lub
m-etylofenol2-etylofenol
lub
o-etylofenol

Zadanie 18.1

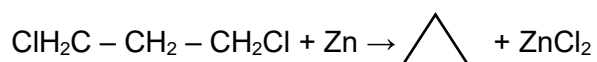
a)



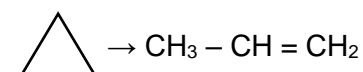
b)

**Zadanie 18.2**

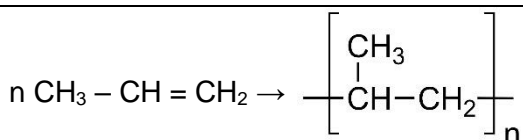
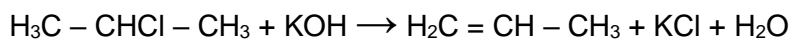
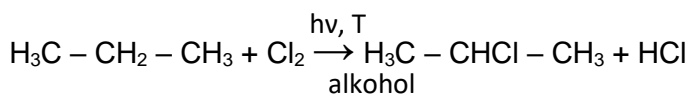
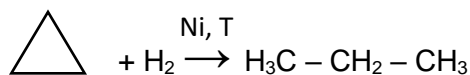
a)



b)

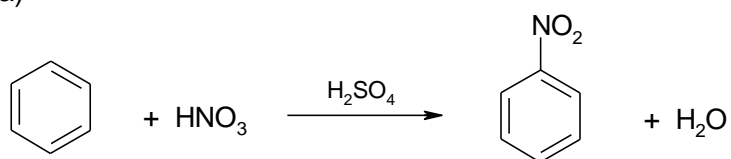


c)

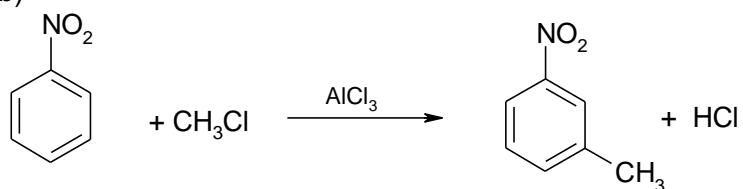
**Zadanie 18.3****Zadanie 18.4**

Zadanie 19.1

a)



b)



Zadanie 19.2

- 1: substytucja elektrofilowa
- 2: substytucja elektrofilowa

Zadanie 19.3

5,15%